

Slowplay

Jig, Reels & Hornpipes

◆ Contents ◆

- | | | | |
|----|-----------------------|----|----------------------|
| 1 | Wise maid | 14 | Mug of brown ale |
| 2 | Tarbolton | 15 | Humours of Tulla |
| 3 | Connaughtman's ramble | 16 | Peeler's jacket |
| 4 | Kesh | 17 | Rose in the heather |
| 5 | Rights of Man | 18 | Tar road to Sligo |
| 6 | Maid behind the bar | 19 | Off to California |
| 7 | Merry blacksmith | 20 | Sailor's bonnet |
| 8 | Out on the ocean | 21 | Far from home |
| 9 | Morrison's | 22 | Haste to the wedding |
| 10 | Boys of Bluehill | 23 | Road to Lisdoonvarna |
| 11 | Flowers of Edinburgh | 24 | Miss McLeod's |
| 12 | Drowsy Maggie | 25 | Scholar |
| 13 | My darling asleep | 26 | Blarney pilgrim |

Wise maid

reel

Ireland

(4 bar intro)

5

9

13

3

1

www.hillgrovemusic.com

Tarbolton

reel

Ireland

(4 bar intro)

5

9

13

www.hillgrovemusic.com

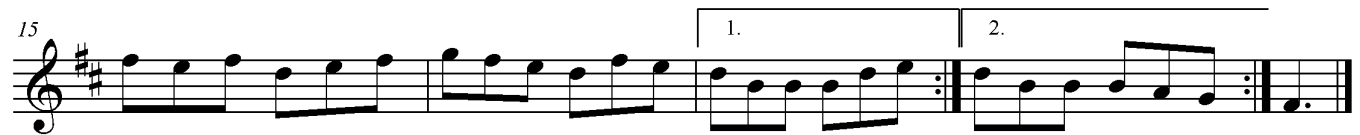
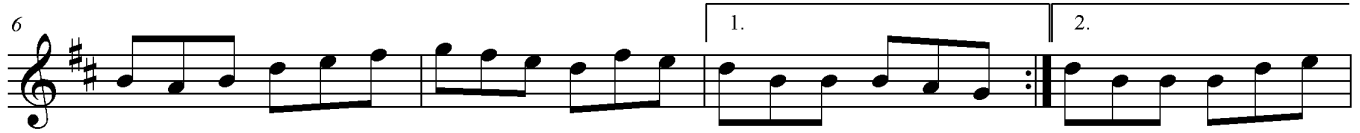
2

Connaughtman's ramble

jig

Ireland

(4 bar intro)



3

www.hillgrovemusic.com

Kesh

jig

Ireland

(4 bar intro)



www.hillgrovemusic.com

Rights of Man

hornpipe

(4 bar intro)

England

Hornpipe rhythm



5

www.hillgrovemusic.com

Maid behind the bar

reel

(4 bar intro)

Ireland



www.hillgrovemusic.com

Merry Blacksmith

reel

Ireland

(4 bar intro)

6

11

15

7

www.hillgrovemusic.com

Out on the ocean

jig

Ireland

(4 bar intro)

6

11

16

www.hillgrovemusic.com

8

Morrison's

jig

Ireland

(4 bar intro)

9

www.hillgrovemusic.com

Boys of Bluehill

hornpipe

Ireland

Hornpipe rhythm

(4 bar intro)

www.hillgrovemusic.com

Flowers of Edinburgh

reel

Scotland

(4 bar intro)



www.hillgrovemusic.com

Drowsy Maggie

reel

Traditional

(2 bar intro)



www.hillgrovemusic.com

My darling asleep

jig

Ireland

(4 bar intro)



13

www.hillgrovemusic.com

Mug of brown ale

jig

Ireland

(4 bar intro)



www.hillgrovemusic.com

14

Humours of Tulla

reel

Ireland

(8 bar intro)

Musical notation for the first 14 measures of the piece. It consists of four staves of music in treble clef, key of D major (one sharp), and common time (C). The melody is written in a single line. Measure numbers 6, 10, and 14 are indicated at the start of their respective staves. The piece ends with a double bar line and repeat dots in the 14th measure.

15

www.hillgrovemusic.com

Peeler's jacket

reel

Ireland

(4 bar intro)

Musical notation for the first 13 measures of the piece. It consists of four staves of music in treble clef, key of D major (one sharp), and common time (C). The melody is written in a single line. Measure numbers 5, 9, and 13 are indicated at the start of their respective staves. The piece ends with a double bar line and repeat dots in the 13th measure.

www.Hillgrovemusic.com

16

Rose in the heather

jig

Ireland

(4 bar intro)



17

www.hillgrovemusic.com

Tar road to Sligo

jig

Ireland

(2 bar intro)



www.hillgrovemusic.com

Off to California

hornpipe

(4 bar intro)

Ireland

Hornpipe rhythm

Musical score for 'Off to California' hornpipe, featuring a 4-bar intro and four staves of music. The key signature is one sharp (F#) and the time signature is common time (C). The music consists of eighth and sixteenth notes, with several triplet markings (indicated by a '3' above the notes). The score ends with a double bar line and repeat dots.

19

www.hillgrovemusic.com

Sailor's bonnet

reel

(4 bar intro)

Ireland

Musical score for 'Sailor's bonnet' reel, featuring a 4-bar intro and four staves of music. The key signature is one sharp (F#) and the time signature is common time (C). The music consists of eighth and sixteenth notes, with a triplet marking (indicated by a '3' above the notes). The score ends with a double bar line and repeat dots.

www.hillgrovemusic.com

20

Far From Home

reel

Ireland

(4 bar intro)



21

www.hillgrovemusic.com

Haste to the wedding

jig

Ireland

(4 bar intro)



www.hillgrovemusic.com

22

Road to Lisdoonvarna

jig

(3 bar intro)

Ireland



23

www.hillgrovemusic.com

Miss McLeod's

reel

Ireland

(4 bar intro)



www.hillgrovemusic.com

24

Scholar

reel

Ireland

(4 bar intro)

Musical score for the reel 'Scholar'. It consists of four staves of music in treble clef, key of D major (two sharps), and common time (C). The first staff is a 4-bar introduction. The second staff begins at measure 6 and includes two first/second endings. The third staff begins at measure 11. The fourth staff begins at measure 16 and also includes two first/second endings. The piece concludes with a double bar line at the end of the second ending on the fourth staff.

25

www.hillgrovemusic.com

Blarney Pilgrim

jig

Ireland

(4 bar intro)

Musical score for the jig 'Blarney Pilgrim'. It consists of five staves of music in treble clef, key of D major (two sharps), and 6/8 time. The first staff is a 4-bar introduction. The second staff begins at measure 6 and includes a repeat sign. The third staff begins at measure 11. The fourth staff begins at measure 16 and includes a repeat sign. The fifth staff begins at measure 20 and concludes with a double bar line.

www.hillgrovemusic.com

26